

PtMS for Windows Help: Tools

Click on the link to jump directly to the help topic. You can click on the "Return to top" link to return to this menu.

Help Topics

[PtMS SQL Database Backup](#)
[PtMS SQL Database Restore](#)

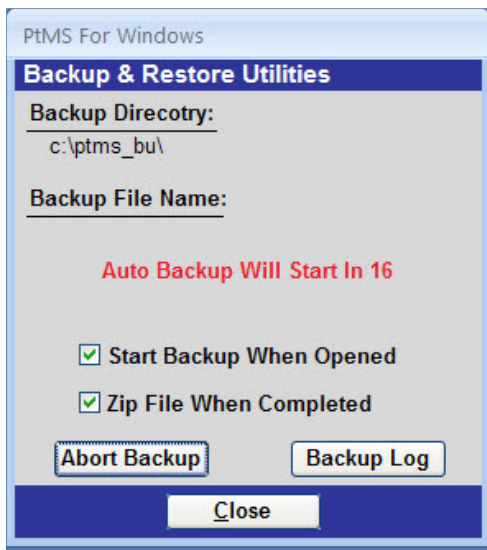
PtMS SQL Database Backup

Users must set the backup folder used by the Backup program on the "**PtMS Options/User Options window.**"

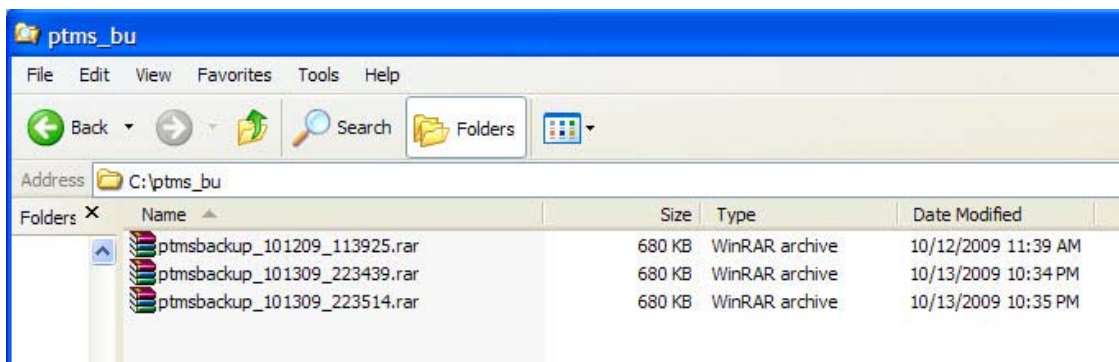
The screenshot shows the 'PtMS - User Options' window. A red box highlights the 'BackupDir' parameter with the value 'c:\ptms_bu\' and a red arrow points to the 'User Options' tab. A text box explains that the backup folder used by the PtMS Backup program is set in the User Options window.

User Parameter	Parameter Value	Parameter Description
AccessDir	C:\Program Files\Microsoft Office\Office12\msaccess.exe	Include entire path and program name of Access
BackupDir	c:\ptms_bu\'	End with "\". Backup Directory
GeoConfirm	No	Check for Geocodes. Must be Yes or No.
NotesDir	C:\program Files\ABS\PtMSAccess2007\cltnotes\	End with "\". Client notes directory
PtmsDir	C:\program Files\ABS\PtMSAccess2007\	End with "\". PtMS Windows Install Directory
ServiceRequest	PtMS_SnReq.accdb	Service Request Module name with extension
StreetsDir	c:\streets\	End with "\". Streets directory
StreetsExe	streets.exe	Streets executable file, NO PATH
StreetsProgDir	c:\streets\	End with "\". Streets prog.txt directory
StreetsResultDir	C:\streets\	End with "\". Streets prog.log directory
ViewerDir	c:\windows\notepad.exe	Include path and program name of Client Notes viewer
WordDir	C:\Program Files\Microsoft Office\Office12\winword.exe	Word path and EXE.

The program "C:\program files\abs\ptmsaccess2007\ptms_backup.accdb" launches the backup program. This program should be setup with a desktop icon to launch the backup program on demand as needed. Setting the backup program to run as a scheduled task is strongly recommend.



The backup program will backup up all SQL PtMS data tables into a single Access 2007 database and store this database in compressed rar file format in the PtMS backup folder. Backup files are named with the date and time so that each time the program is run it creates a unique backup of the PtMS database.



[Return to top](#)

PtMS SQL Database Restore

Database restore operations should only be conducted in consultation with the ABS support team. Contact ABS for additional instructions on performing this operation.

[Return to top](#)