

PtMS-Streets Mapping Setup

There are several steps a user must complete to setup the Streets on A Disk mapping software to work correctly with PtMS for Windows. This document will detail those steps for users.

Table of Contents

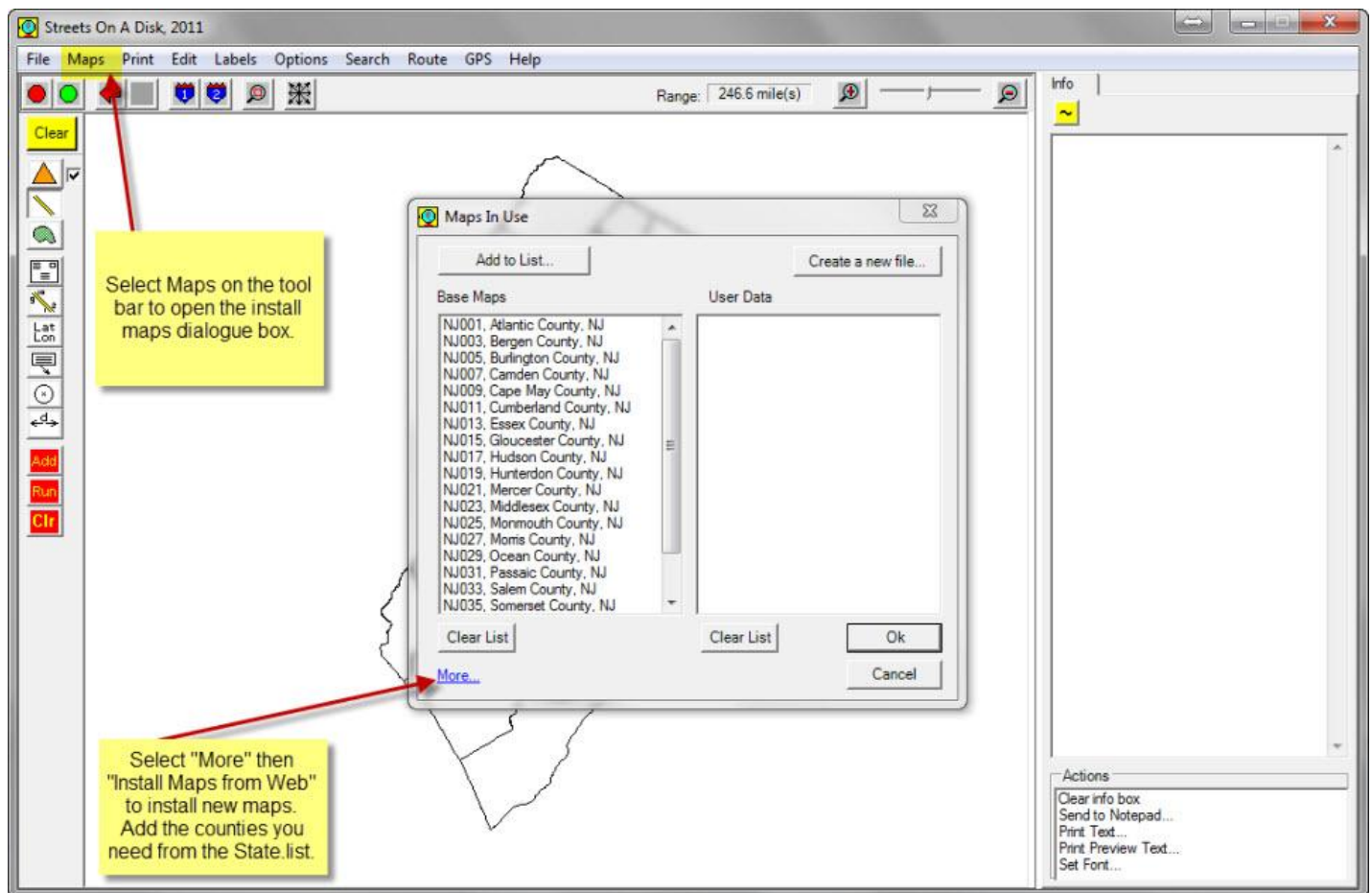
PtMS-Streets Mapping Setup	1
Table of ContentsInstall Streets on Workstation	2
Install Streets on Workstation.....	3
Load the Maps	4
Set Maps as the Default	5
Set the Script Path	6
Geocode a Destination to Test Your Setup steps.....	8

Install Streets on Workstation

Streets on a Disk must first be installed on the users workstation in the folder C:\Streets. It is possible to use a different folder, however, users must make sure they modify the PtMS Client Records/Options/User Options table with the alternate Streets path if a different path location is used.

Load the Maps

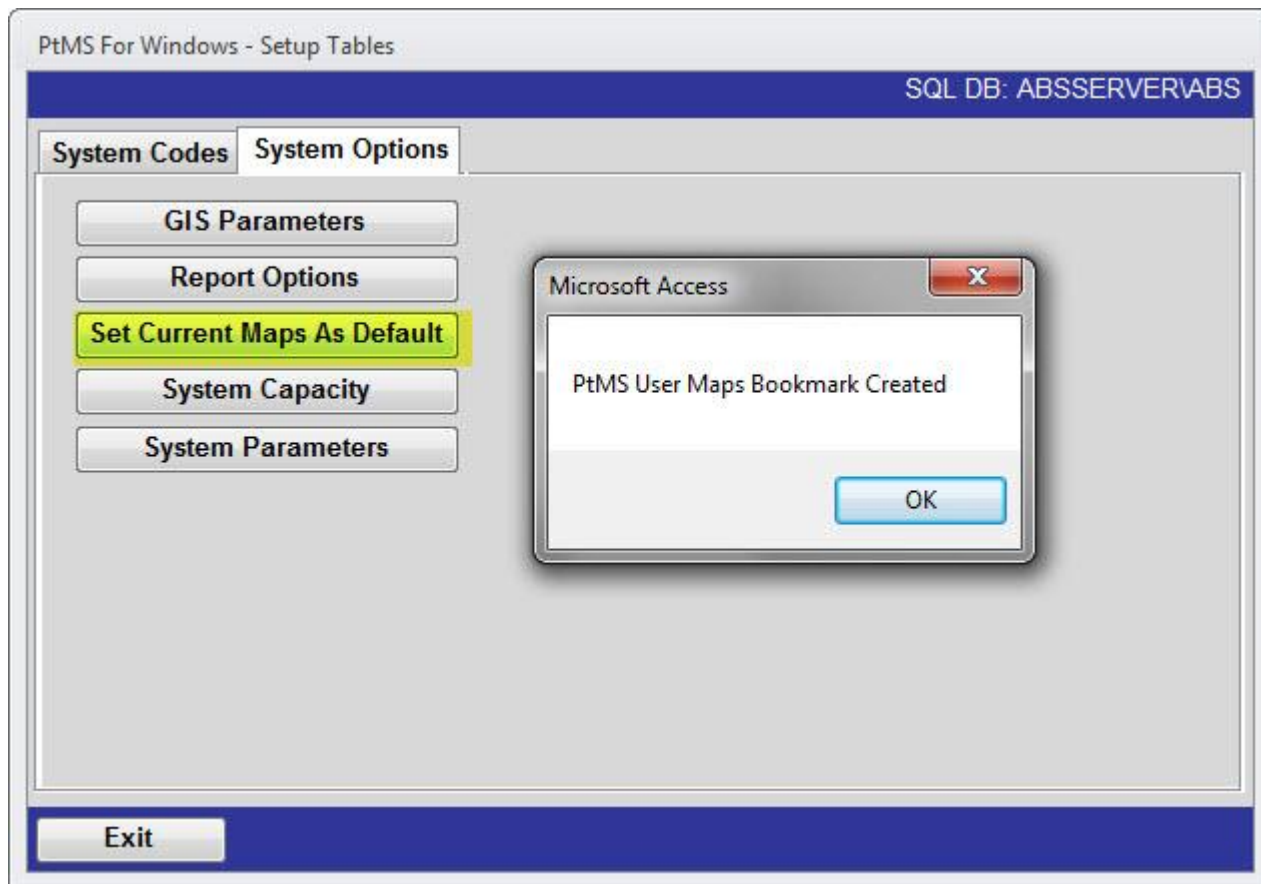
From the PtMS Menu select Applications/Database/Setup Tables. This will automatically start Streets. Load the maps using the instructions listed below.



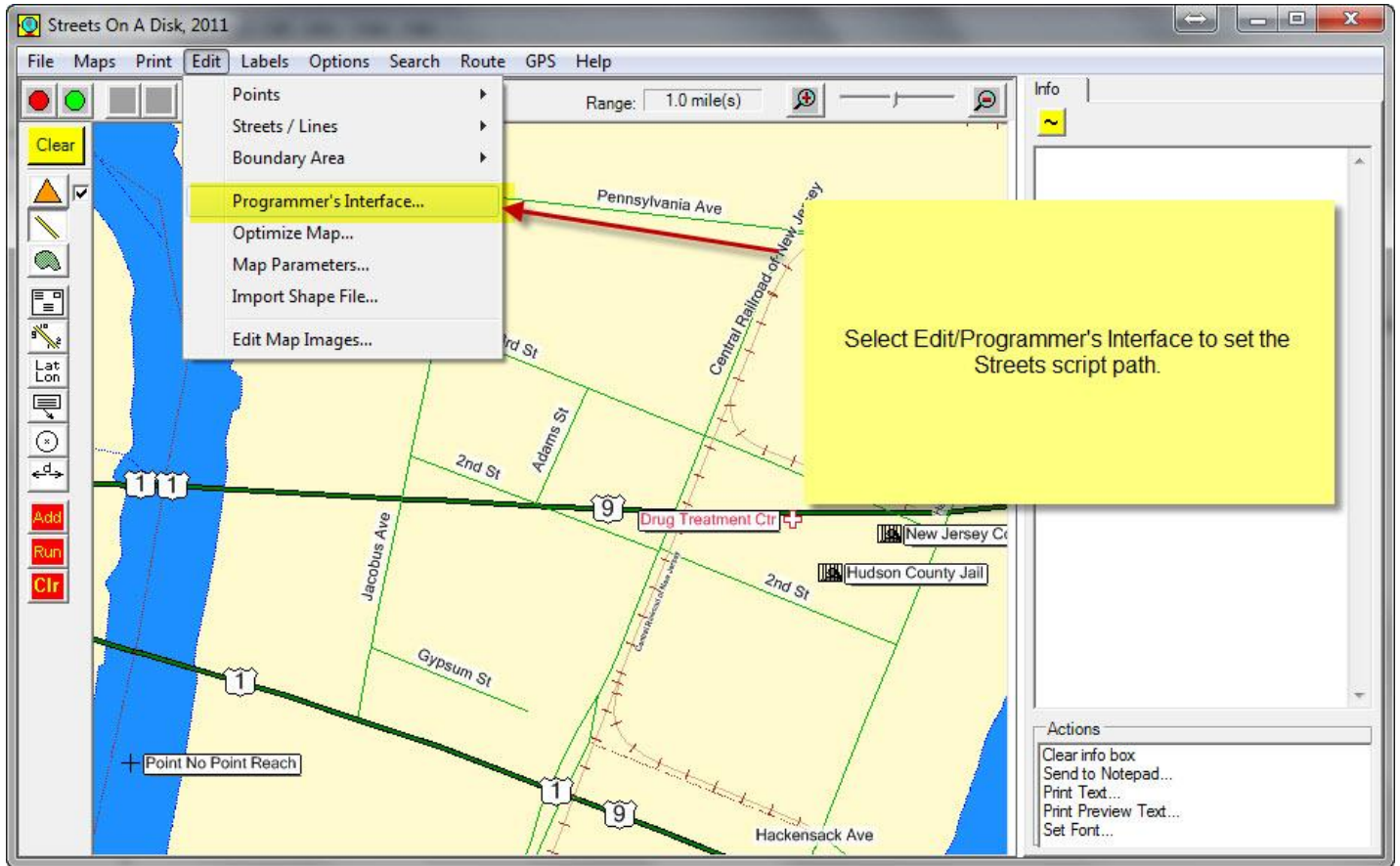
0

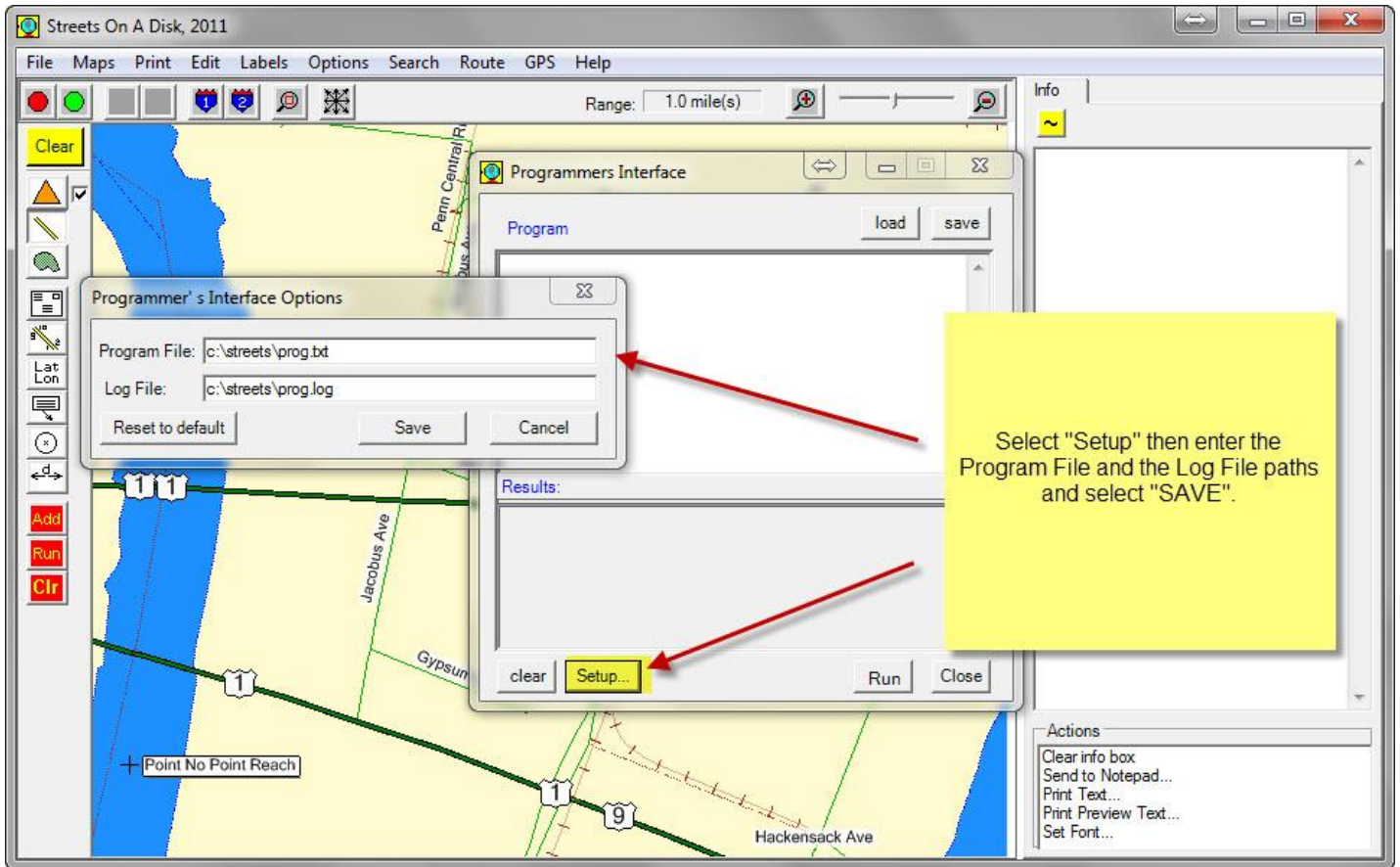
Set Maps as the Default

This step tells PtMS for Windows that the current map files open in Streets are the default maps and should be loaded each time Streets opens. On the PtMS Setup Tables menu select the System Options tab at the top then select the "Set Current Maps as Default" button.



Set the Script Path





Geocode a Destination to Test Your Setup steps

As a final task, test the geocoding function using the PtMS Setup Destinations screen to make sure you have configured Streets correctly.